



## The House

- ❖ Large Lawn Deck
- ❖ High-Speed Internet
- ❖ Central Air-Conditioning
- ❖ Outside Enclosed Shower
- ❖ 400 Foot Walk To Lighthouse
- ❖ 300 Foot Walk To White Sand Beach
- ❖ TV/Cable, Phone, Microwave In Each Unit
- ❖ Two Units - Each Unit With Spacious Private Deck
- ❖ Duplex - Sleeps Eight In Each Unit. Great For Family Reunions



## THE POINT

- ❖ Newly restored beach
- ❖ Quiet and beautiful with lighthouse and uncrowded beach
- ❖ Sunset Beach with lovely sunsets and Cape May "diamonds"
- ❖ Internationally known Bird Sanctuary with seasonal bird and monarch butterfly migration
- ❖ Walk to Lighthouse Park, climb the tower, visit the nature museum



## CAPE MAY

- ❖ Horse-drawn carriages
- ❖ Lots of fun for the family
- ❖ Historic town with charming Victorian Homes
- ❖ Wonderful restaurants, shops, and antique stores



Come vacation with us at  
*Glad Tidings*

Cape May Point, New Jersey



**203 Whilldin Avenue**

*Near The Lighthouse In Quiet, Picturesque  
Cape May Point, New Jersey*

[www.gladtide.com](http://www.gladtide.com)

Ron & Mariah Gladis  
1434 Treeline Drive  
Malvern, PA 19355  
610-251-0932  
ron@gladtide.com.

*"We've been going to the Point for 28 years now and it always feels good. There's no traffic, and at night we can take an evening stroll down the middle of the street. It's also the first place we let our kids go around the block on their bicycles."*

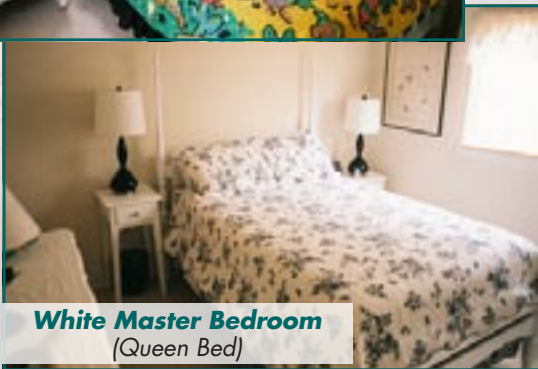
- Ron & Mariah

## First Floor Unit



**Living Room** – including **alcove** with pull down couch (double) and a daybed (twin) and ceiling fan

**Yellow Room**  
(Double Bed)

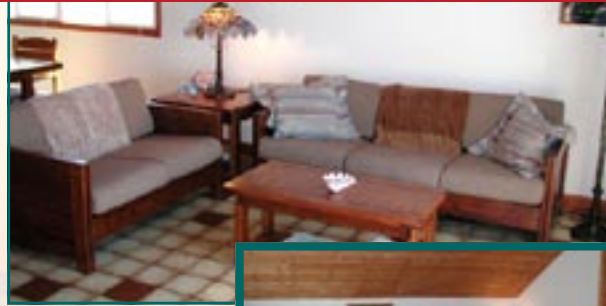


**White Master Bedroom**  
(Queen Bed)

**Blue Room** (2 Twins)



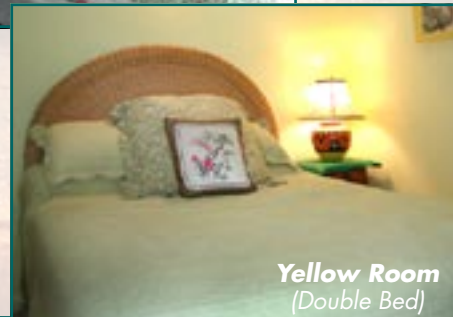
## Second Floor Unit



**Living Room**  
(above) and **alcove** (right) with pull down couch (double) and a daybed (twin)



**White Master Bedroom**  
(Queen Bed)



**Yellow Room**  
(Double Bed)

**Blue Room** (2 Twins)



## Glad Tidings Features – Each Unit

### Living Space

- ❖ Three Bedrooms plus Sleeping Alcove
- ❖ Sleeps Eight
- ❖ Bathroom
- ❖ Spacious Furnished Private Deck
- ❖ High-Speed Internet Access
- ❖ Two Televisions with Cable TV
- ❖ DVD Player
- ❖ Telephone

### Appliances

- ❖ Central Air Conditioning
- ❖ Heat Pump
- ❖ Washer and Dryer
- ❖ Range/Oven
- ❖ Refrigerator
- ❖ Microwave
- ❖ Coffee Maker
- ❖ Toaster
- ❖ Toaster Oven
- ❖ Blender
- ❖ Iron & Ironing Board
- ❖ Vacuum Cleaner
- ❖ Fans



*Backyard Deck*

### Outdoors

- ❖ Gas Grill
- ❖ Outdoor Furniture
- ❖ Outside Enclosed Shower
- ❖ Backyard Deck

